

West Burton Solar Project

Environmental Statement

Figure 4.1: Illustrative Site Layout Plan West Burton 1

[Revision A](#)

Prepared by: Island Green Power

~~March~~ November 2023

PINS reference: EN010132

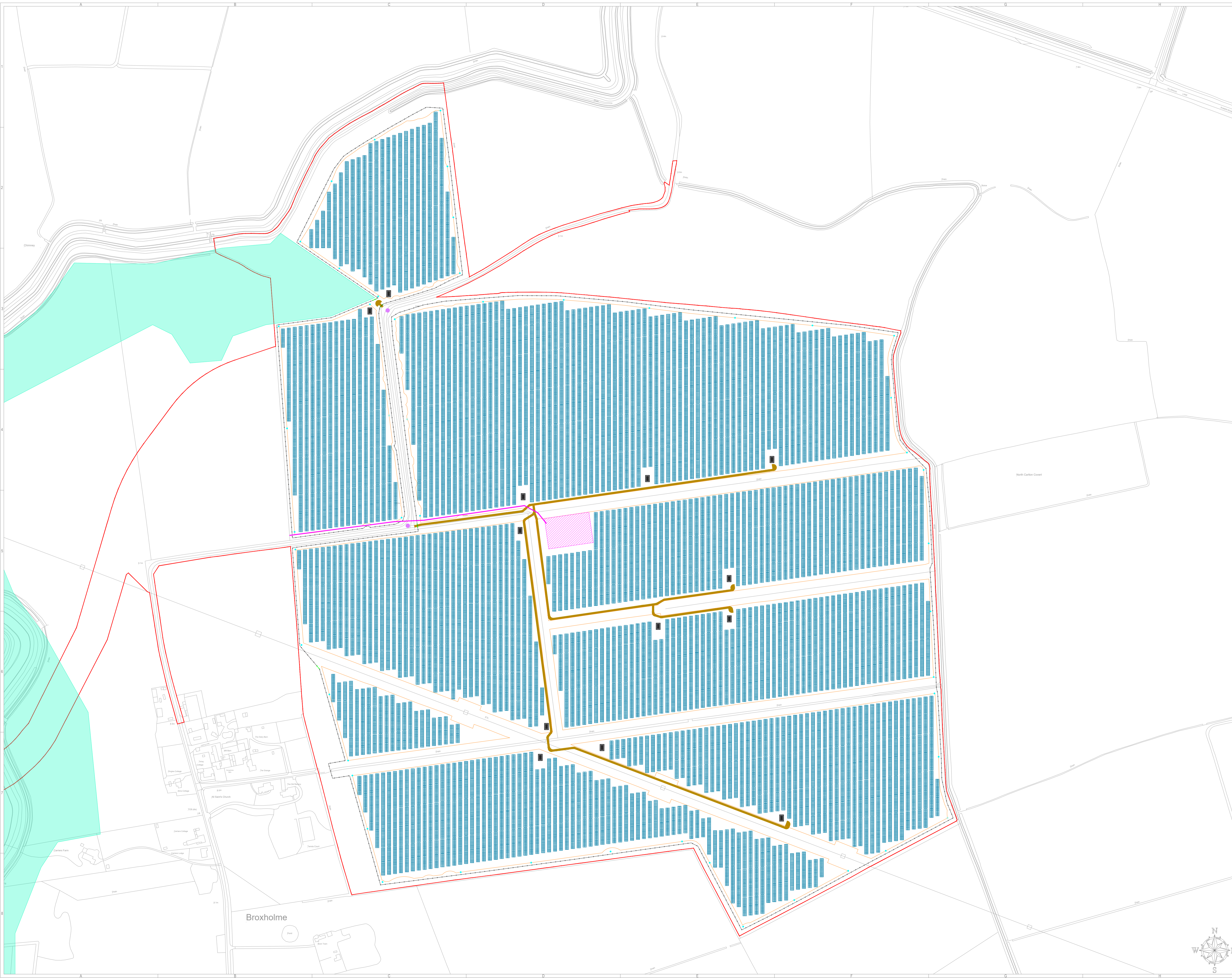
Document reference: [APPEX1](#)/WB6.4.4.1 [A](#)

APFP Regulation 5(2)(a)



Schedule of Changes

<u>Figure Reference</u>	<u>Page</u>	<u>Description of Changes</u>	<u>Reason for Revision</u>
<u>WB6.4.4.1_A</u> <u>Figure 4.1 Illustrative</u> <u>Site Layout Plan West</u> <u>Burton 1</u>	<u>3</u>	<u>Addition of River Till Flood</u> <u>Storage Area to plan</u>	<u>Requested by the Environment</u> <u>Agency in their Relevant</u> <u>Representation reference: [RR-</u> <u>090].</u>



General Legend:	
	Order Limits
	Fence
	Potential Development Area
	Mounting Structures and Solar PV Modules
	Conversion Units
	Electrical Substation
	High Voltage Electricity Cable
	Maintenance Tracks
	Gates
	Site Access
	CCTV
	River Till Flood Storage Area

Project:	West Burton 1 Solar Project	
Project Location:	Land East of Broxholme, Lincolnshire, LN1 2ZS	
Ownership:	West Burton Solar Project Limited	
Document Title:	Figure 4.1 Illustrative Site Layout Plan (WB1) Revision A Document Ref: EX1\WB5-4.4.1_A AFFP Regulation: 5(2)(a)	
Sheet format:	A1 "594 x 594"	Scale: 1:2500
Document amendments:	v.1 22/08/2023	M.N.
Company:	Island Green Power UK Limited Unit 25.7, Coda Studios 189 Munster Road, London SW6 6AW	